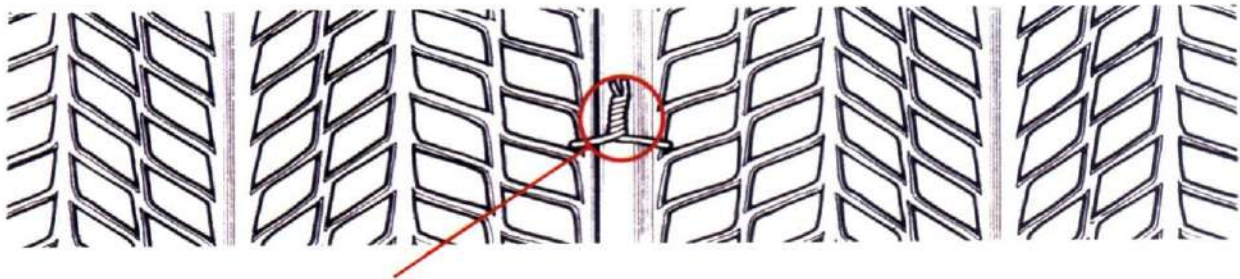


# METAL RIBBED LATH

## Metal ribbed lath

### uses

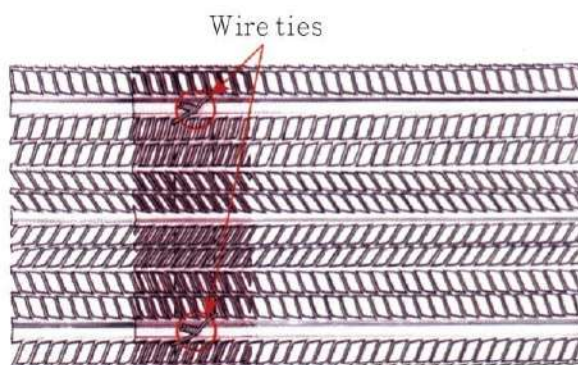
The method to fix ribbed lath is very simple. Ribs should always run vertically to supports with the apex of rib un-contact with the support and with every rib secured. To fix against timber studs, apply galvanized nail or staple through the rib. Tie galvanized mild steel wire round the rib to secure against steel studs. Ribbed-lath should be overlapped at the edge of both sides, the lapped edge ribs being nested and wired together with SWG#18 (1.22mm) galvanized wire at intervals exceeding 150mm. Ribbed-lath should be overlapped not less than 50mm on supports and the ribs wired together with SWG#16 galvanized wire. Where end laps occur between supports, the ribbed-lath should be overlapped not less than 100mm and the ribs wired together with 1.63mm galvanized wire at least two ties to each pair of overlapping ribs.



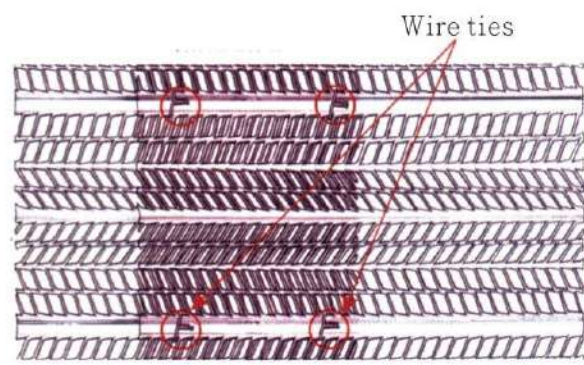
Side ribs nested and wired at 150mm intervals

## Material & Manufacturing Method

The C L metal Ribbed Lath, material used is hot-dip galvanized coil complying with international standard (JIS.BS ), Manufacturing method is to expand coil through automatic machines.



50mm (2") lap under support State



100mm (4") lap between support State

Ref.No	Material Thickness (mm)	Weight(10%) (Kg/m)	Standard sheet size (mm)	Maximun span (mm)
CL-361	0.3	1.2	2500x610	500
CL-461	0.4	1.6	2500x610	600
CL-561	0.5	2.0	2500x610	700

*In addition to the above-mentioned specification, we offer customized services, size as per customer's demand. Pleas contact us.*



UTILI INDUSTRIAL CO.,LTD Tel:886-7-2220991 Fax:886-7-2226921  
 Http://www.utili.com.tw E-mail:yuchihco@ms12.hinet.net