

Features

- Single lever handle allows for both on/off activation and temperature setting
- Includes faceplate with handle, shower arm with flange and showerhead
- Includes single-function 2.5 gpm (9.5 lpm) showerhead
- MasterClean™ sprayface features an easy-to-clean surface that withstands mineral buildup
- Coordinates with Devonshire faucets, accessories, and showering components to complete your bathroom
- THIS TRIM HAS BEEN REPLACED BY THE NEW K-TS396-4 TRIM. THE NEW TRIM IS IDENTICAL AND INCLUDES TRIM ADAPTER KITS FOR BOTH RITE-TEMP K-304/K-2971 HIFLOW AND THE NEW K-8304 SERIES VALVE
- Rite-Temp™ pressure-balancing technology maintains water temperature within +/- 3°F

Material

- Premium material construction for durability and reliability
- KOHLER finishes resist corrosion and tarnishing

Installation

- Trim only; requires valve to complete installation (sold separately)

Optional Products/Accessories

K-373 Wall-mount bath spout, NPT connection
K-373-S Wall-mount bath spout, slip-fit connection
K-389 Wall-mount bath spout with diverter, NPT connection
K-389-S Wall-mount bath spout with diverter, slip-fit connection
88526 Thin Wall Trim Kit
GP1030932 Deep Roughing-In Kit

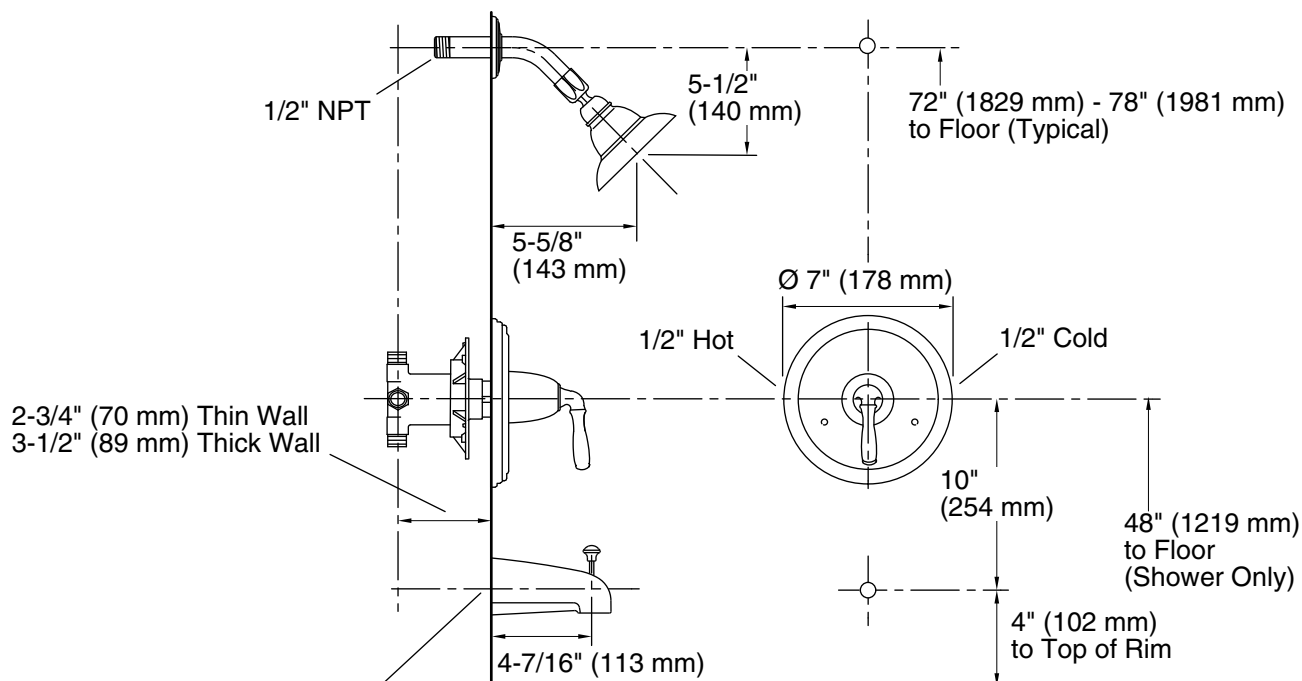


Codes/Standards

ASME A112.18.1/CSA B125.1

KOHLER® Faucet Lifetime Limited Warranty

See website for detailed warranty information.



For slip-fit spout, 5/8" OD tube must extend 3-1/4" (83 mm) max beyond the finished wall.
For 1/2" NPT spout, pipe must extend 3-5/8" (92 mm) beyond the finished wall.

Complete bath and shower faucet with Rite-Temp valve and slip-fit diverter spout shown.

Technical Information

All product dimensions are nominal.

Drain included: No

Showerhead/Body Spray:

Rated maximum flow: 2.5 gal/min (9.5 l/min)

Notes

Install this product according to the installation guide.

Install the Rite-Temp valve according to the valve installation guide.

Cap shower outlet if deck-mounted spout, diverter, or handshower is connected to the spout outlet.

Avoid cross-flow conditions. Do not install shut-off device on either valve outlet.

Install straight pipe or tube drop of 7" (178 mm) to 18" (457 mm) with single elbow between valve and wall-mount spout.

NOTICE: Risk of product damage. Long screws, for installing trim, can damage the K-2971-KS valve. Consult the trim installation guide to verify if the thin wall installation kit (88526) is needed.