

# PLANITOP 560

Lime-cement skimming mortar with an ultra-fine finish for render



## WHERE TO USE

Ultra-fine skimming mortar for interiors and exteriors, of traditional or ready-mixed, cured and fresh (using the “wet on wet” technique) renders, before decoration with a thin coat of paint or mineral and synthetic coatings.

### Some application examples

- Smoothing interior and exterior cement lime mortar or ready-mixed fresh renders (within 24 hours of its application), before painting or applying coloured floor or ceiling coatings.
- Smooth finishing interior and exterior cement lime mortar and ready-mixed cured wall and ceiling renders.
- Smoothing renders in rooms where wall paper or light-weight textile coverings will be applied.
- Levelling precast *predalles* ceilings.
- Fine finishing of coarse grained levelling.

## TECHNICAL CHARACTERISTICS

**Planitop 560** is a standard setting, one-component ready-mixed ultra-fine skimming compound based on white coloured hydraulic and aerated binders, selected grained Carrara lime sands, with a controlled and guaranteed white colour, special additives and synthetic powder polymers prepared to a special formula developed in the MAPEI Research and Development Laboratories.

Thanks to its special composition and fine texture, the finish obtained by mixing **Planitop 560** with water has a high bond strength and is easy to apply with a flat metal trowel.

**Planitop 560** can be applied between 0 and 2 mm thick per coat.

In good weather, coloured finishing products from the **Silexcolor**, **Silancolor**, **Quarzolite**, **Elastocolor**, **Colorite** or **Dursilite** ranges may be applied 4 weeks after applying **Planitop 560**. **Dursilite** may be used for decorating internal or external surfaces as long as they are partially covered and protected from direct exposure to the sun and rain.

**Planitop 560** is classified as GP (“General purpose mortar for internal/external render”), category CS IV according to EN 998-1.

## RECOMMENDATIONS

- For thicknesses above 2 mm on “fresh” or cured renders, apply **Planitop 510**, **Planitop 530** or **Planitop 540** and finish with **Planitop 560**.
- Do not apply **Planitop 560** at temperatures below +5°C or above +35°C.
- Do not add cement, lime, additives or aggregates to **Planitop 560**.
- Do not apply **Planitop 560** on painted surfaces.
- Do not apply **Planitop 560** on plastic coatings (use **Planitop 200**, **Planitop 207** or **Planitop 210**).
- Do not use **Planitop 560** to smooth cementitious substrates, ceramic or wooden floors.
- Do not apply **Planitop 560** on gypsum-based renders without having previously applied **Primer G**.
- Do not apply **Planitop 560** directly on dusty or crumbling renders (first apply **Primer G**).
- Do not use **Planitop 560** on windy days or when the surfaces are in direct sunlight.
- Do not apply on dehumidified renders (use a skimming compound from the **Mape-Antique** range or coloured finishings from the **Silexcolor** or **Silancolor** range).

## APPLICATION PROCEDURE

### Preparing the substrate

Surfaces must be clean, sound and free of dust. It is recommended to carefully prepare the substrate by removing any loose material that could interfere with bonding.

If it is necessary to level some uneven parts which are thicker than 3 mm, apply several coats of **Planitop 510**, **Planitop 530** or **Planitop 540** and then smooth with **Planitop 560**.

If it is necessary to level cured renders, wet the surface first before applying the product and make sure the film of surface water is completely removed.

### Preparing the finishing compound

Pour 7.8-8.6 litres of water into a clean container and, while mixing slowly, add a 20 kg bag of **Planitop 560**. Mix for several minutes making sure any unblended powder from the bottom and the sides of the container is removed. Mix until a homogeneous, completely lump-free mixture is obtained. It is recommended to use a low speed mechanical stirrer in order to prevent excess air entrapment.

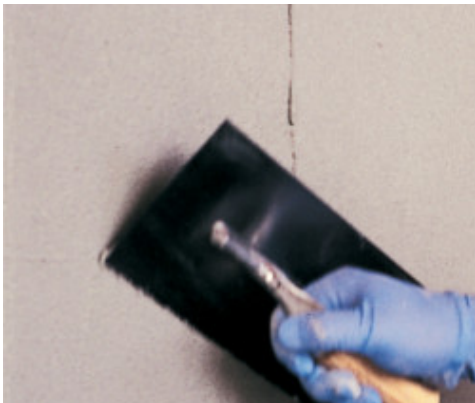
In order to completely disperse the contained additives, let the mixture stand for approximately 3 minutes after its preparation. Re-mix briefly before use. Avoid preparing the mix manually.

### Applying the finishing compound

Apply the compound to the surface with a flat metal trowel. Smooth from 0 to 2 mm thick making sure the substrate is completely covered.

The surface finishing can be carried out with the same flat metal trowel some minutes after its application.

During hot or windy weather, or in particularly hot areas, spray water on the surface of the smoothing compound when it starts to set (that is, when it may be pressed lightly without leaving fingerprints) and over the next few days when the mortar has completely hardened, to avoid quick drying and hygrometric shrinkage which may cause cracks to form. This is to avoid rapid drying and hygrometric shrinkage that could cause cracks. Once hardened, the product can be sanded in order to obtain a perfectly smooth surface.



Applying Planitop 560 with a metal trowel



Smoothing Planitop 560 surface with a metal trowel

## INSTRUCTIONS TO BE FOLLOWED DURING AND AFTER APPLICATION

No particular precautions need to be taken at temperatures around +20°C.

At high or low temperatures or strong ventilation, the normal precautions for the use of cementitious material need to be taken.

For a better finish and protective result, it is suggested to use the coloured finishes from the **Silexcolor**, **Silancolor**, **Elastocolor**, **Quarzolite**, **Colorite** or **Dursilite** ranges.

**Dursilite** may only be used for decorating internal or external surfaces if they are partially covered and protected.

## CLEANING

It is recommended to wash working tools with water before the product hardens.

Once **Planitop 560** hardens tools can only be cleaned by mechanical means.

## COLOUR

White.

## CONSUMPTION

Approx. 1.1 kg/m<sup>2</sup> per mm of thickness.

## PACKAGING

20 kg bags.

## STORAGE

**Planitop 560** can be stored for 12 months in original packaging and in a dry sheltered place.  
The product complies with the conditions of Annex XVII to Regulation (EC) N° 1907/2006 (REACH), item 47.

## SAFETY INSTRUCTIONS FOR PREPARATION AND APPLICATION

**Planitop 560** is irritant, it contains cement that when in contact with sweat or other body fluids causes irritant alkaline reaction and allergic reactions to those predisposed.  
It can cause damage to eyes.

In case of contact with eyes or skin wash immediately with plenty of water and seek medical attention.

It is recommended to use protective gloves and goggles.

For further and complete information about the safe use of our product please refer to the latest version of our Material Safety Data Sheet.

PRODUCT FOR PROFESSIONAL USE.

**Planitop 560: white lime-based ultra-fine skimming mortar compound for interior and exterior cementitious renders and concrete surfaces in compliance with EN 998-1 Standards**

### TECHNICAL DATA (typical values)

#### PRODUCT IDENTITY

Consistency: powder

Colour: white

Maximum size of aggregate (EN 1015-1) (mm): < 0.1

Bulk density (kg/m<sup>3</sup>): 950

Dry solids content (%): 100

#### APPLICATION DATA OF PRODUCT (at +20°C - 50% R.H.)

Colour of mix: white

Mixing ratio: 100 parts of **Planitop 560** with 39-43 parts of water (approximately 7.8-8.6 litres of water per 20 kg bag of product)

Consistency of mix: thixotropic-trowellable

Density of the mix (EN 1015-6) (kg/m<sup>3</sup>): 1,670

Application temperature range: from +5°C to +35°C

Pot life of mix (EN 1015-9): approx. 2 hours

Maximum applicable thickness per layer (mm): 2

Minimum waiting time before painting with coloured finishing products from the Silexcolor, Silancolor, Elastocolor, Quarzolite, Colorite or Dursilite ranges:	28 days		
<b>FINAL PERFORMANCE (mixing water 41%: mixing according to EN 1015-2)</b>			
Performance characteristic	Test method	Requirements according to EN 998-1	Performance of product
Compressive strength after 28 days (N/mm <sup>2</sup> ):	EN 1015-11	CS I (from 0.4 to 2.5)	Category CS IV
		CS II (from 1.5 to 5.0)	
		CS III (from 3.5 to 7.5)	
		CS IV (≥ 6)	
Bond strength to substrate (render) (N/mm <sup>2</sup> ):	EN 1015-12	declared value and failure mode (FP)	≥ 0.4 Failure mode (FP) = B
Capillary action water absorption [kg/(m <sup>2</sup> ·min <sup>0.5</sup> )]:	EN 1015-18	from Category W 0 to Category W 2	Category W 0
Coefficient of permeability to water vapour (μ):	EN 1015-19	declared value	≤ 20
Thermal conductivity (λ <sub>10,dry</sub> ) (W/m·K):	EN 1745	chart value	0.38 (P = 50%)
Reaction to fire:	EN 13501-1	Euroclass	A1

## WARNING

Although the technical details and recommendations contained in this product data sheet correspond to the best of our knowledge and experience, all the above information must, in every case, be taken as merely indicative and subject to confirmation after long-term practical application; for this reason, anyone who intends to use the product must ensure beforehand that it is suitable for the envisaged application. In every case, the user alone is fully responsible for any consequences deriving from the use of the product.

Please refer to the current version of the Technical Data Sheet, available from our website [www.mapei.com](http://www.mapei.com)

1058-7-2013-en

Any reproduction of texts, photos and illustrations published here is prohibited and subject to prosecution

